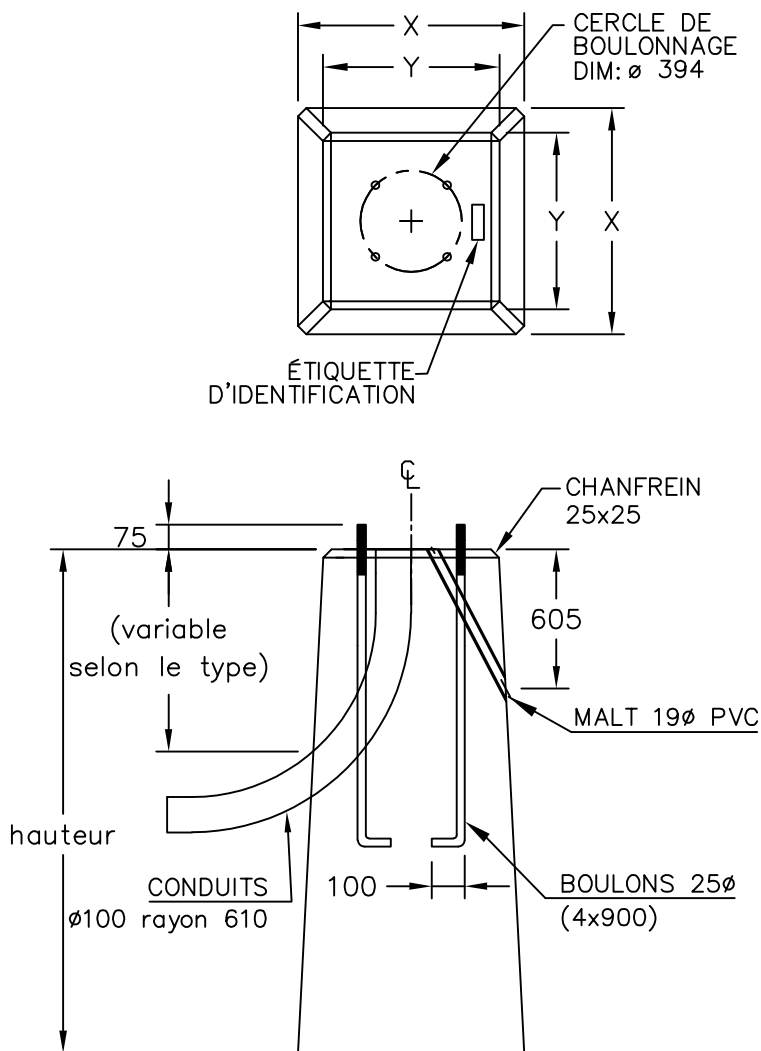


BASES DE LAMPADAIRE

**Base de lampadaire
préfabriquée en béton armé
pour conduits Ø 100 mm en C.P.V.**

BL-7CR
(MONTRÉAL DNI-4A-100) TYPE



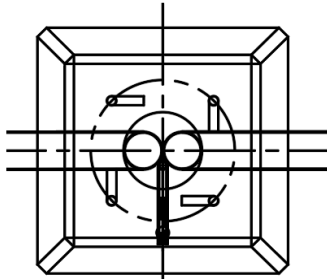
	X	Y	Hauteur (mm)	Poids (Kg)
BL-7CR	685	535	1524	1361

Béton : 35 MPa

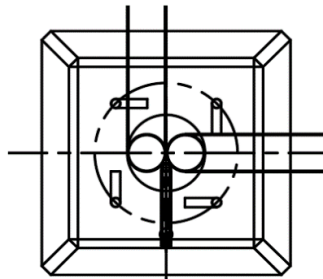
Toutes les dimensions sont exprimées en millimètres sauf indication.

Le béton et les aciers d'armature sont conformes aux exigences de la Ville de Montréal #DNI-4A-100

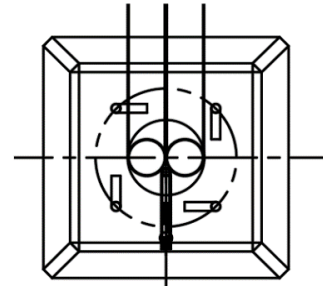
TYPES NORMALISÉS DE BASES DE LAMPADAIRE



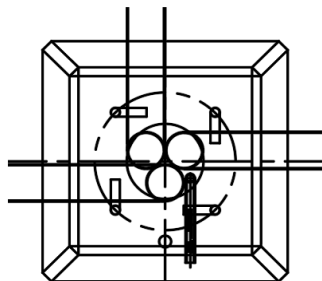
Type 1



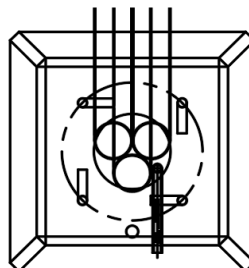
Type 2



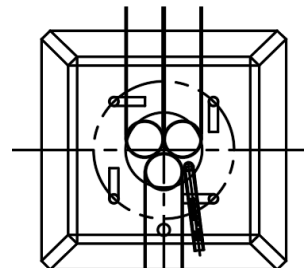
Type 3



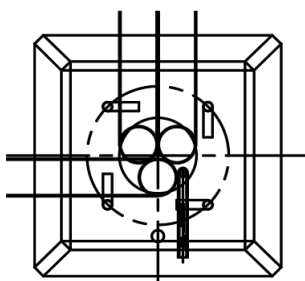
Type 4



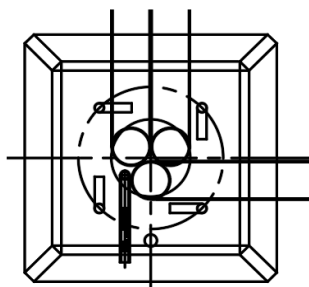
Type 5



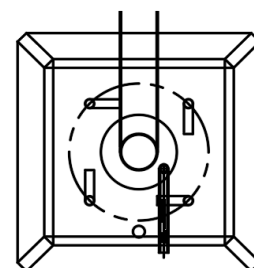
Type 6



Type 7



Type 8



Type 9